

Prokaryotes

- cells have no nucleus or membrane bound organelles

Eukaryotes

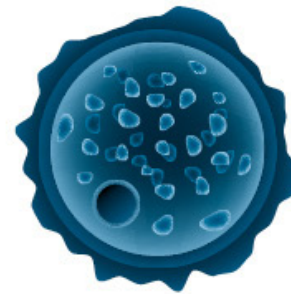
- cells have a nucleus and membrane bound organelles

Bacteria

- single celled
- peptido-glycan cell wall

Protists

- single celled



Plants

- multi-cellular
- sessile
- **autotrophic**
- cellulose cell wall



Fungi

- multi-cellular
- **chitin cell wall**
- sessile
- heterotrophic



Animals

- multi-cellular
- **no cell wall**
- motile
- heterotrophic

